

### FEATURES

- Perfect safety in case of power failure. No electricity needed to keep the Magnetic chuck ON.
- Power from all poles transferred to Rings / Plates held in concentric.
- High resistance to coolant.
- It has high mechanical rigidity and proven robustness.
- High resistance to both Axial and Radial forces enabling application of Heavy cuts

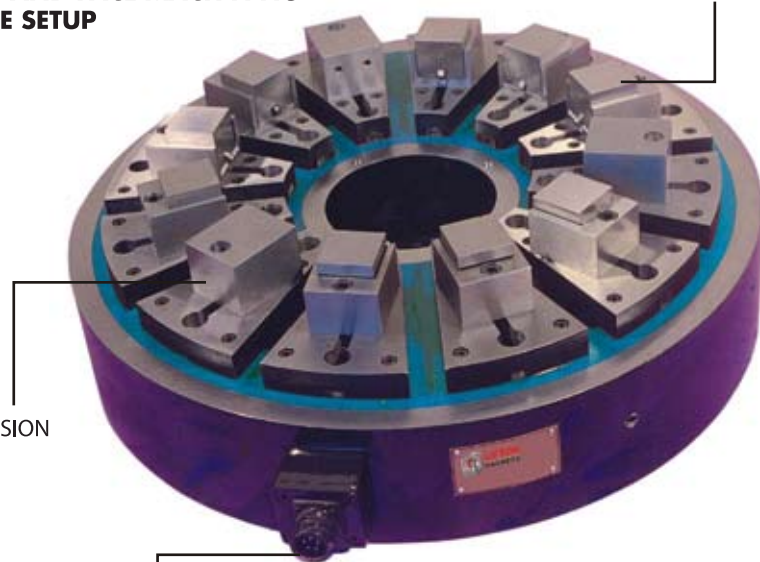
### APPLICATIONS

- Clamps ferromagnetic Rings on vertical and horizontal turning lathes.
- Radially movable location blocks will help to position and secure work pieces (bearing rings, thrust bearings, etc.); this is also necessary for clearance of the cutting tool or wheel.
- Mobile Pole extensions ensures perfect clamping of irregular work pieces.

For power connection bayonet connector is recommended, when the chuck is intended to be used in different machines. Carbon Brush Holder with Brass collector slip rings for fitting on the machine spindle for Power supply is recommended when the chuck is for specific machine.

### ID, OD AND FACE MACHINING IN ONE SETUP

### MOBILE EXTENSION BLOCK

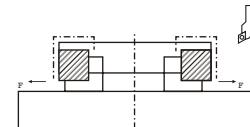


### FIXED POLE EXTENSION

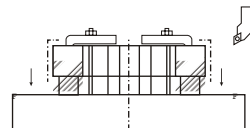
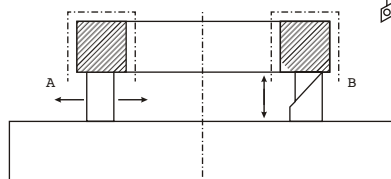
### DETACHABLE BAYONET PLUG FOR POWER SUPPLY



### Chuck Jaw Clamping



### Radial Pole Clamping



Product Code : EPMR

All dimensions are in mm.

PART NO	OD	H	ID
30	300	90	90
45	450		150
50	500		175
60	600		200
80	800	100	250
100	1000		250
120	1250	110	300
150	1500		500
170	1750		500
200	2000	115	500
250	2500		600

Due to continuous upgradation in design there could be changes in specification. Other sizes on request. Before ordering, contact Lifton Magnets or your nearest dealer to confirm the suitability of this model for your application.

